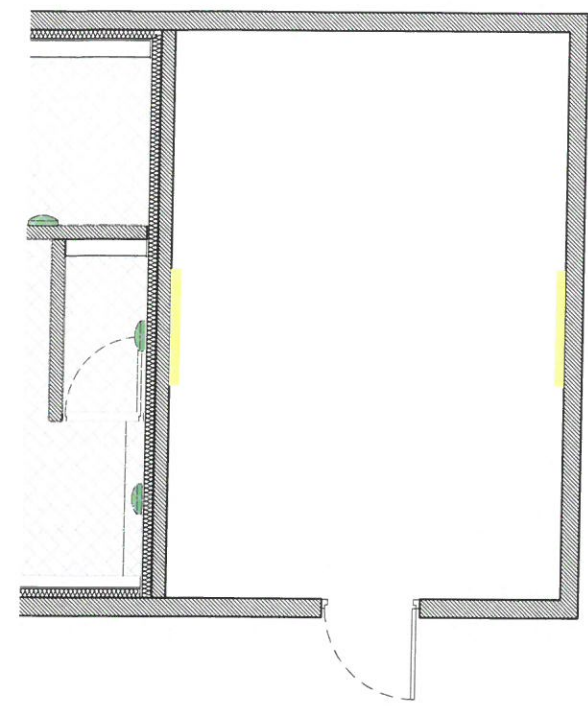
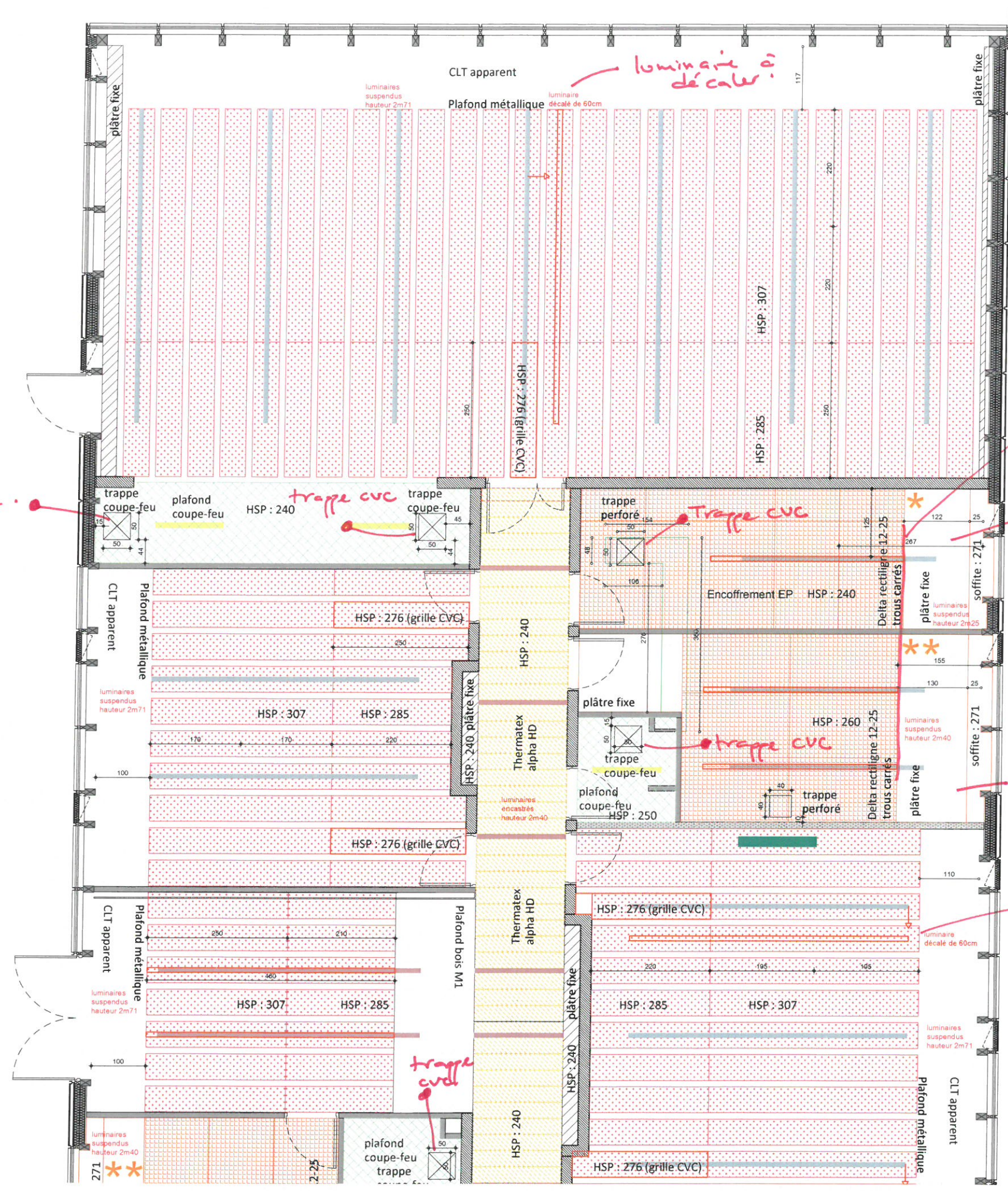


11/03/2019. RDC



rajout  
trappe élec.



luminaires à décaler

aligner  
luminaires

hsp  
2m40  
luminaires  
2m25

hsp 2m60  
lum. 2m40.

luminaires  
à décaler

\*  
- h:  
\*\*  
\*\*\*



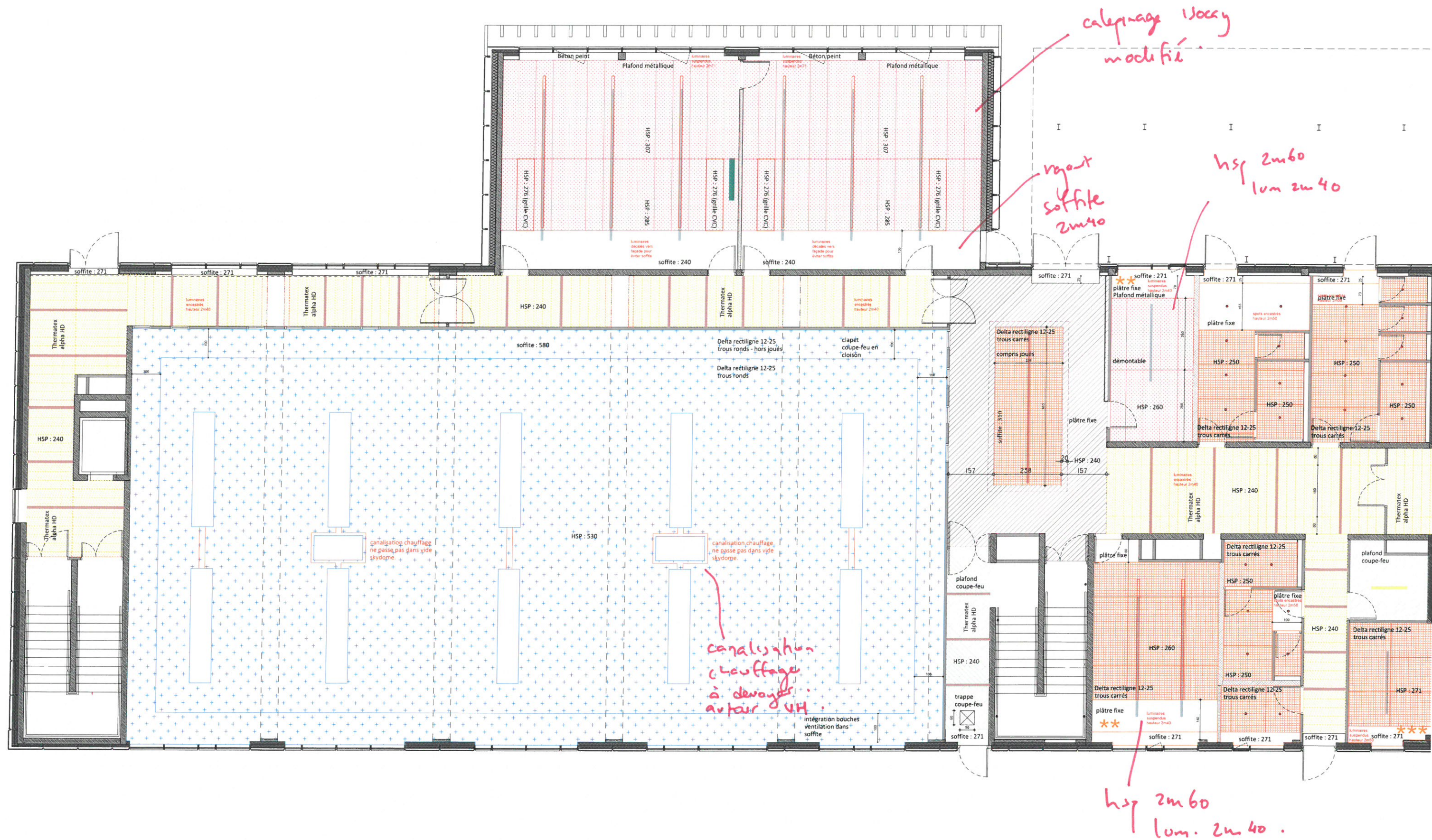






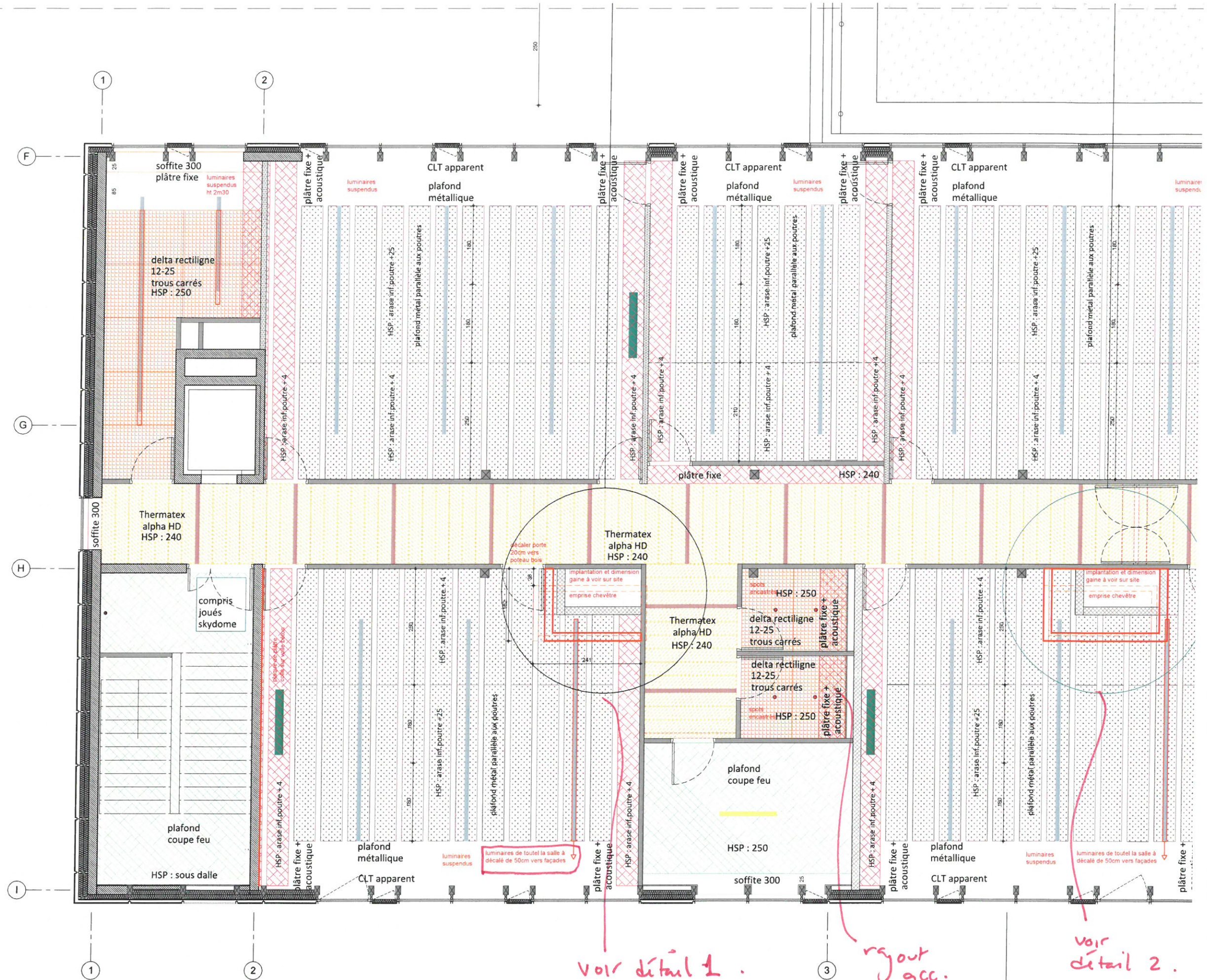
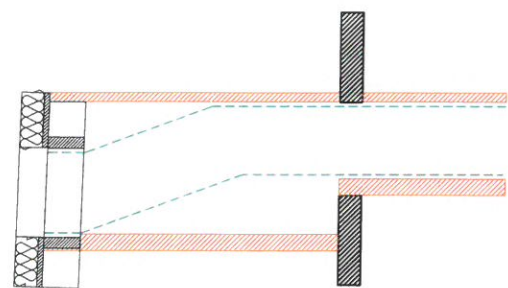


RDC





R+1.



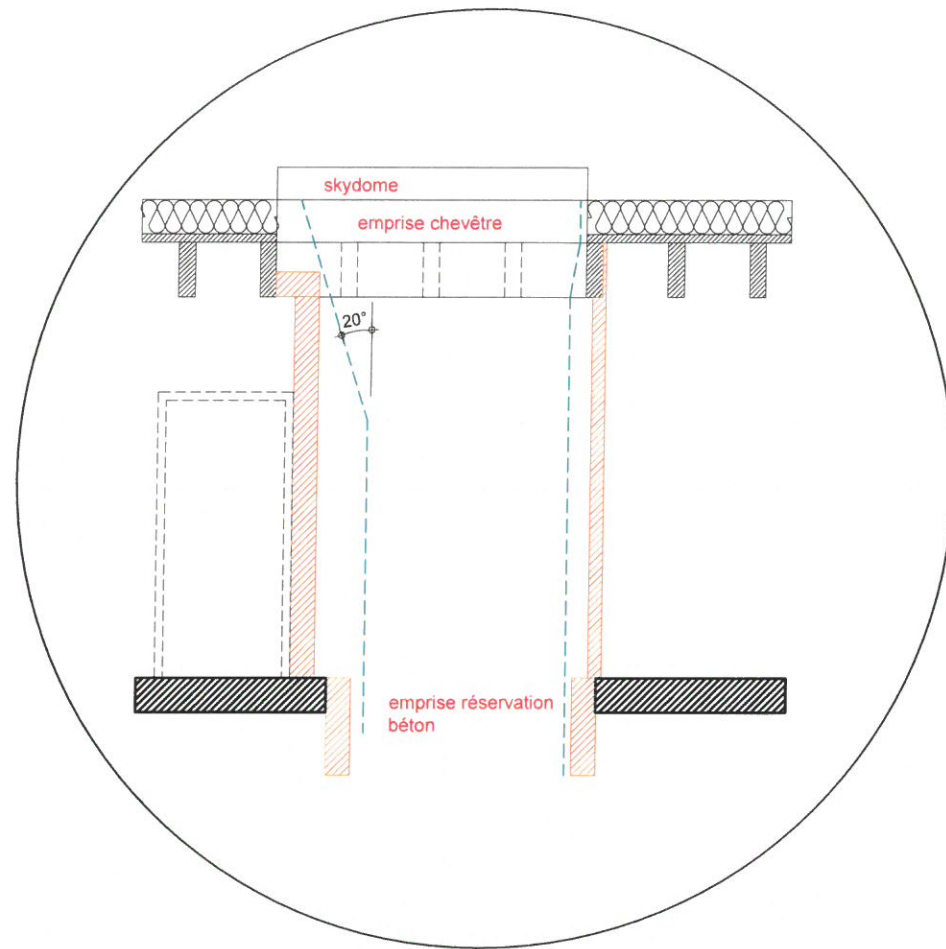


Architectural floor plan of a large hall with a central staircase and multiple rooms. The plan shows various ceiling types (acoustic, metallic, CLT), lighting fixtures (suspended, recessed), and structural elements (beams, columns). A central staircase area is labeled "compris joués skydome". A red circle highlights a specific area on the left side. A red arrow points to a detail of a "gain de gaine à voir sur site" and "emprise chevêtre". A red line indicates a "plaque de plâtre pour un voile béton". A red note "rgout acc." is written near the bottom right. The plan includes dimensions and labels for different materials and finishes.

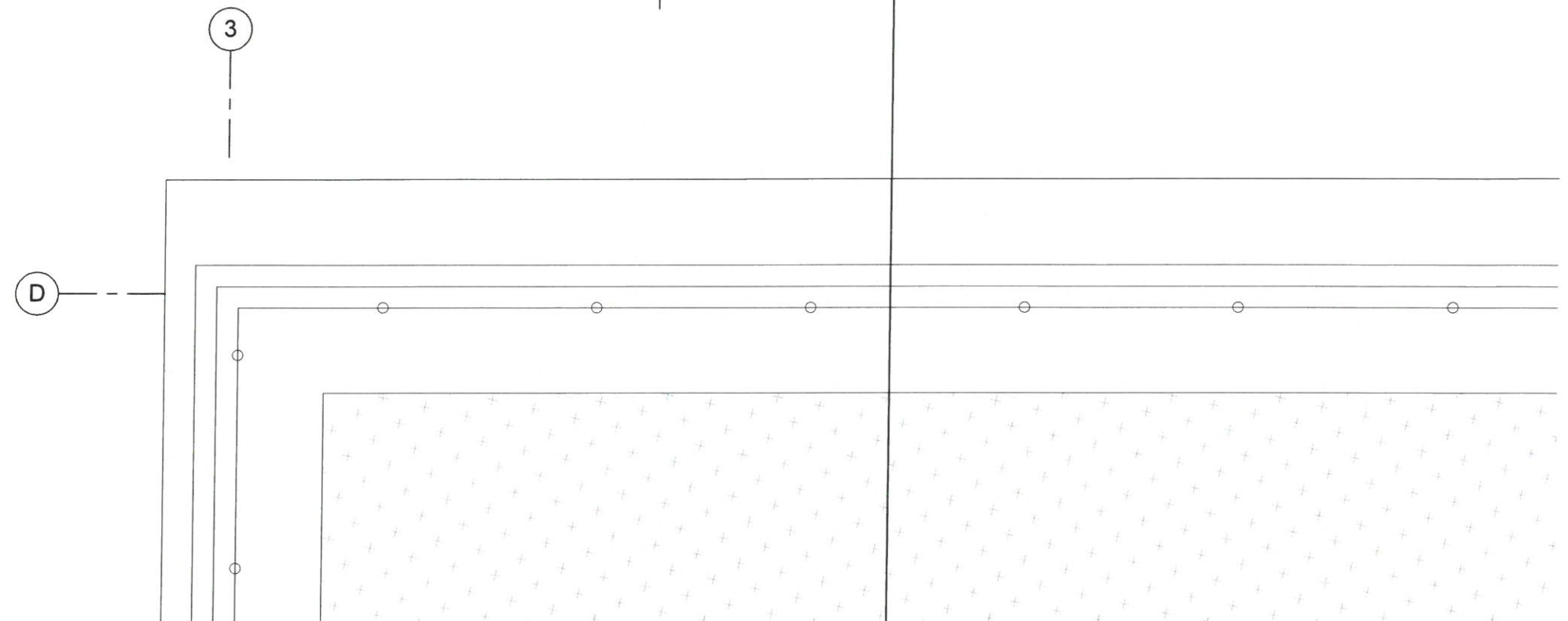
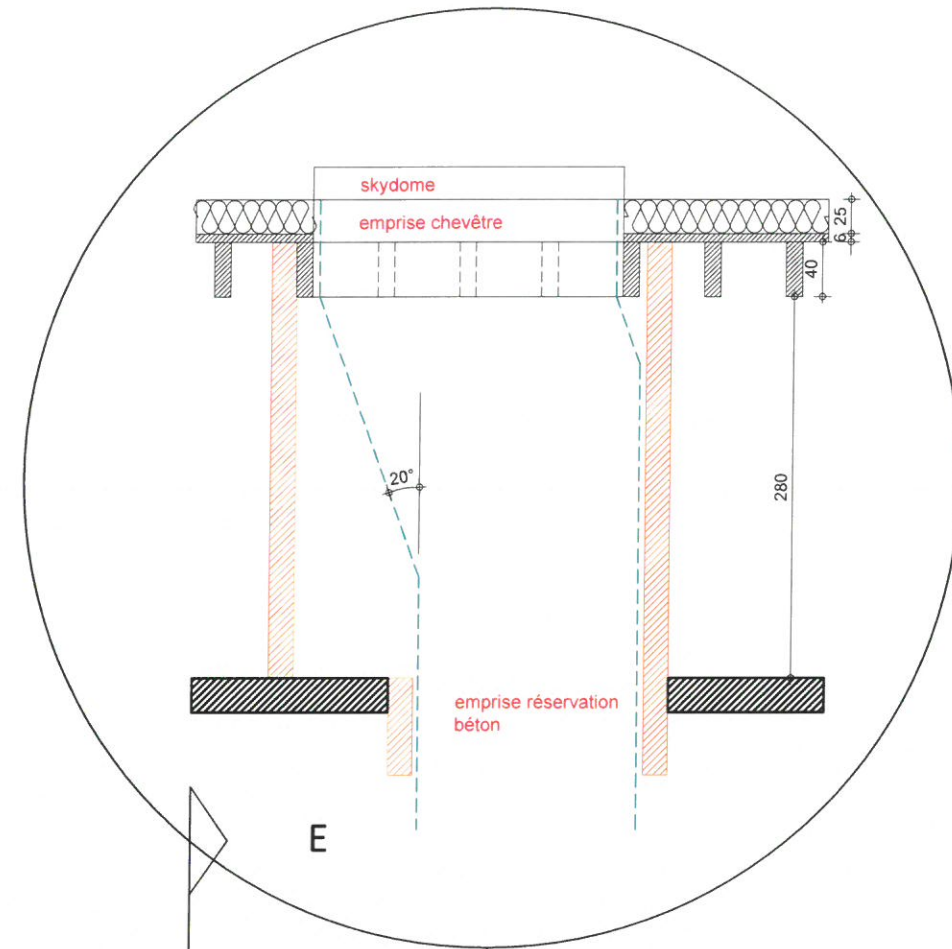


R+1

Détail 1



Détail 2.





3-2.

Suite remorque  
CVC,  
Zone passé  
en démontable  
(ISOCAT)

